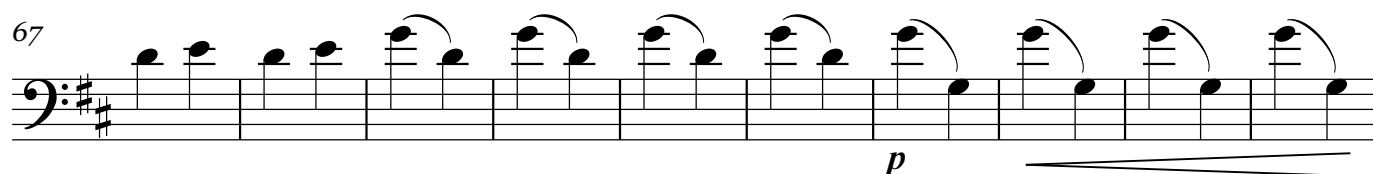
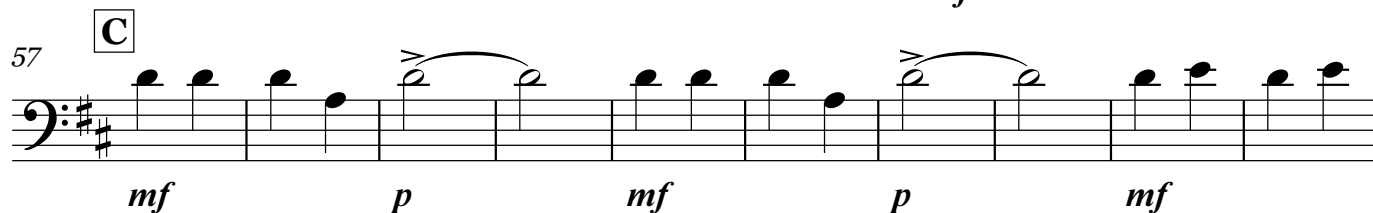
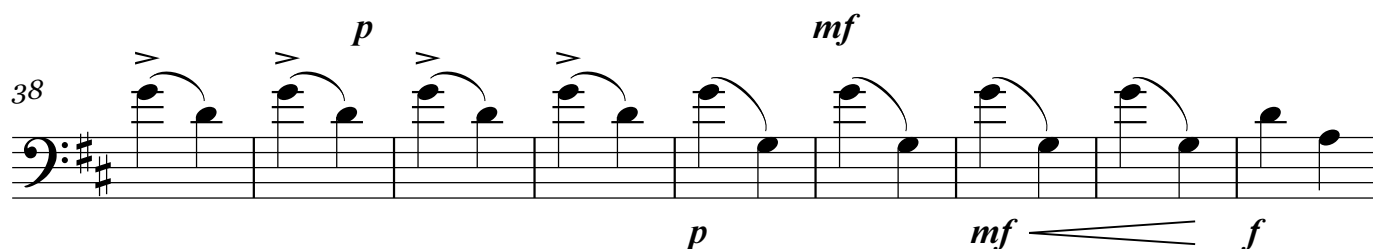


Velkobilovický chrámový sbor a orchestr

**Vánoční pastýřská symfonie****I. Introitus****Moderato****Maestoso**

## Kontrabas

77

77 78 79 80 81 82 83 84

*f* *p*

Staff 77-84: Bass clef, key signature of two sharps (F# and C#). The staff contains eighth and sixteenth notes, with a fermata over the final note of measure 84. Dynamics: *f* (forte) at the beginning, *p* (piano) at the end.

85

85 86 87 88 89 90 91 92 93 94 95 96 97

**D** **4**

Staff 85-97: Bass clef, key signature of two flats (Bb and Eb). The staff contains half notes and quarter notes, with a fermata over the final note of measure 97. Dynamics: *f* (forte) at the beginning, *p* (piano) at the end.

98

98 99 100 101 102 103 104 105 106 107 108

**E** *p*

Staff 98-108: Bass clef, key signature of two flats (Bb and Eb). The staff contains half notes and quarter notes, with a fermata over the final note of measure 108. Dynamics: *p* (piano) at the end.

109

109 110 111 112 113 114 115 116 117 118 119 120

**4** *mf*

Staff 109-120: Bass clef, key signature of two flats (Bb and Eb). The staff contains half notes and quarter notes, with a fermata over the final note of measure 120. Dynamics: *mf* (mezzo-forte) at the end.

121

121 122 123 124 125 126 127 128 129 130

**F** **G** *f* *p*

Staff 121-130: Bass clef, key signature of two flats (Bb and Eb). The staff contains half notes and quarter notes, with a fermata over the final note of measure 130. Dynamics: *f* (forte) at the beginning, *p* (piano) at the end.

131

131 132 133 134 135 136 137 138 139 140 141 142 143

*mf* **4**

Staff 131-143: Bass clef, key signature of two flats (Bb and Eb). The staff contains half notes and quarter notes, with a fermata over the final note of measure 143. Dynamics: *mf* (mezzo-forte) at the beginning.

144

144 145 146 147 148 149 150 151 152 153 154

*f*

Staff 144-154: Bass clef, key signature of two flats (Bb and Eb). The staff contains half notes and quarter notes, with a fermata over the final note of measure 154. Dynamics: *f* (forte) at the end.

155

155 156 157 158 159 160 161 162 163 164

**H** **4** **I** *mf* *f*

Staff 155-164: Bass clef, key signature of two flats (Bb and Eb). The staff contains half notes and quarter notes, with a fermata over the final note of measure 164. Dynamics: *mf* (mezzo-forte) at the beginning, *f* (forte) at the end.

## II. Graduale

167 **Religioso** **4** **J**

*p*

178

185 **K**

*mf*

192 **L** **16**

214 **M** **3** **3**

*mf*

226

233 **N** **4** flet.

241

*p*

## III. Offertorium

Allegro moderato

246 **4** **O** **4** *mf*

258 **P** *f* *p*

266 *mf*

274 **Q** *mf*

282 **R** *p* **6** *mf*

294 **S** *mf*

301 **T** **3**

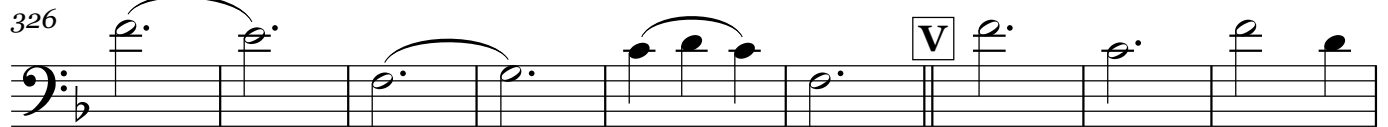
310 *mf* *f*

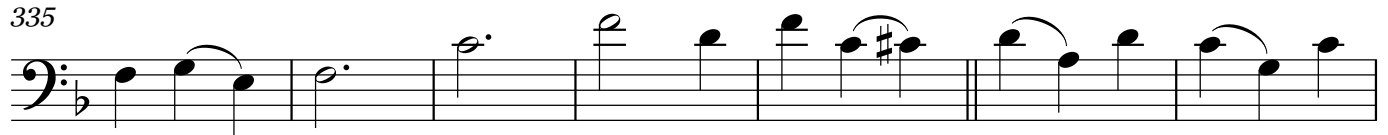
318 **U** *molto rit.*

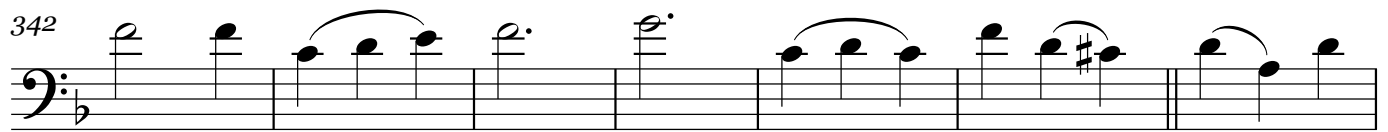
## Kontrabas

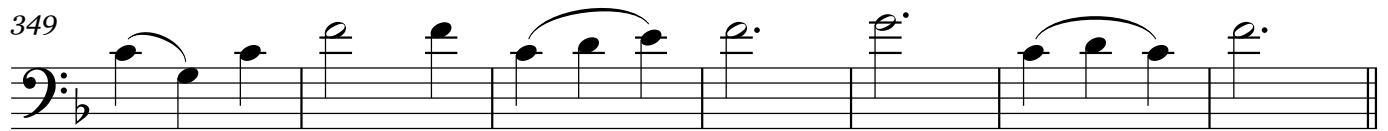
5

Andante

326   
*p* *p*

335 


342   
*mf*


349   
*mp*

356   
*p*

361 

366 

371   
*arco*  
*mf* *mp*

378   
*mp*

## Kontrabas

386

*p* *mf*

393

6

## Allegretto

404

**Y** 8 *mf* *p* *mf*

420

*p* *mf* *mf*

430

439

450

460

< *f*

472

*mf* *p* *mf*

480 **C1** **D1**

*p* *mf*

490

501 **E1**

*f*

## IV. Communio

511 **Lento**

*pp*

519 **F1**

*mf* *p*

528 **G1** 6 lí-bez ně mubu de ku-ká-vat,

541 **H1** **Moderato** **I1** 8

*p* *p* *mf*

553 **J1**

*mf*

559 **K1** arco.

*mf*

pizz. solo tuba+kontrabas

## Kontrabas

564 **L1** *mf* **M1** *f* pizz.

573 *f* pizz. arco.

582 **N1** *mf* 4

594 **O1** *mf*

603 **P1** *p* 4

616 pizz. arco. **Q1** *mf*

626 **R1** *mf* 7 pizz.

643 *mf* **S1** *mf* pizz.

653 arco. **T1** *f* 2